



iPhone 5S

DO-IT-YOURSELF COMPANION

BATTERY

A couple of things you should do before repairing your device:



BACK UP YOUR DATA



POWER PHONE OFF



PLAY SOME TUNES

- 1** Get your SCREW**MAT** ready.
- 2** Make sure that your device is powered down.
- 3** Put on included **tech gloves**.
- 4** Remove (2) bottom screws with **pentalobe** driver as shown in **images 4a-4b**.

1

DO-IT-YOURSELF SCREW**MAT**

INVENTED BY PHONE**DOCTORS**®

for your:
iPhone 5S



- ★ Place the (2) exterior pentaflex screws on these circles
- **BATTERY REPLACEMENT:** Place the (2) interior screws on these circles
- **SCREEN REPLACEMENT:** Place the (13) display (LCD) screws on these circles
- ▨ Carefully unplug flex cables and antenna connectors from circuit board & display using plastic tool

REMINDER

Use the included **SCREW**MAT****
to keep screws organized.

2



4a



4b



1 Use **metal pry tool** to remove screen.

- THERE IS A SMALL GROOVE ON THE SCREEN ASSEMBLY ABOVE HEADSET JACK THAT CAN BE UTILIZED FOR LEVERAGE WHEN PRYING UP SCREEN.

2 Open screen assembly carefully no more than 1" (inch) and proceed to next page.

- **BE AWARE OF AND VERY CAREFUL TO AVOID DAMAGING THE SMALL TOUCH ID FLEX CABLE JUST INSIDE THE OPENING.**

1



2



CAREFUL

Touch ID flex cable

- 1** Remove the metal clip covering the Touch ID flex connector with **tweezers** as shown in **images 1a-1c**.

- THIS PART CAN BE EASILY LOST. PLACE IT ON THE SCREW**MAT**.

- 2** Gently disconnect Touch ID flex connector with **plastic pick** as seen in **image 2**.

- 3** After completing step 2, tilt screen assembly back to open device.



1 Remove the (4) shield screws with the **Phillips** driver as shown in **images 1a-1d**.

- USE SCREW**MAT** FOR ORGANIZATION OF THESE (4) SCREWS.

*** KEEPING PERFECT ORDER OF THESE (4) SCREWS IS IMPERATIVE DUE TO THE LENGTH OF EACH SCREW. PLACING A SCREW IN THE WRONG LOCATION CAN RESULT IN DAMAGE TO YOUR DEVICE.**

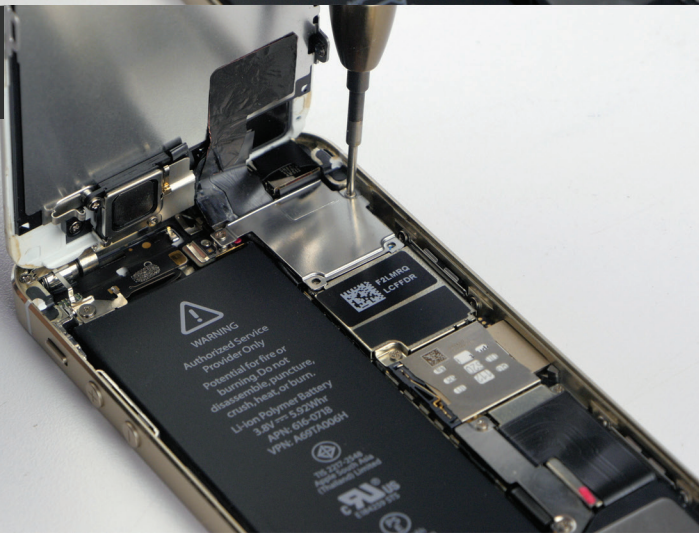
1a



1b



1c



1d

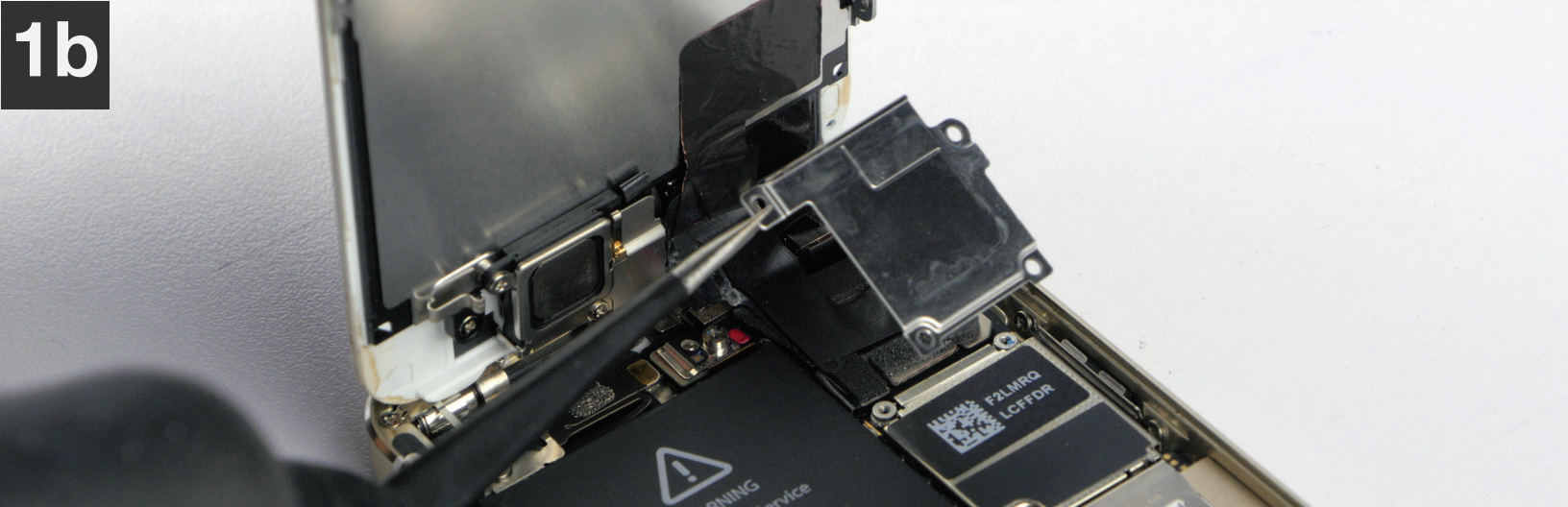


- 1 Carefully remove the flex shield with **tweezers** as shown in **images 1a-1b**.

1a



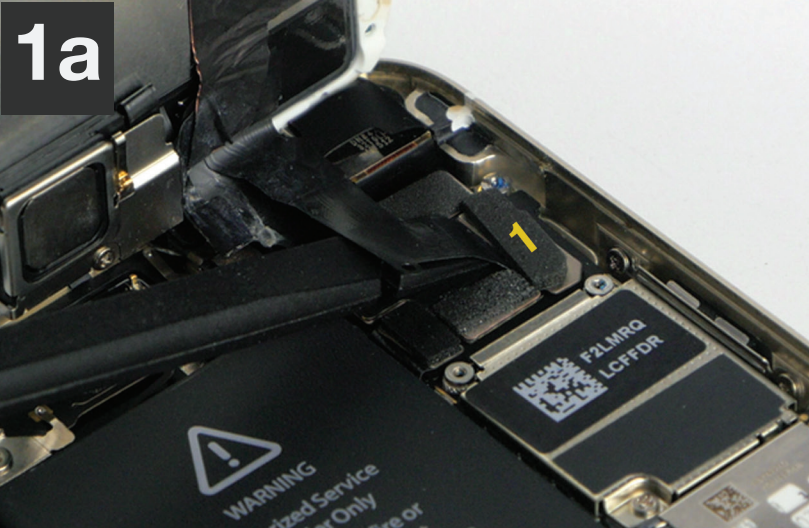
1b



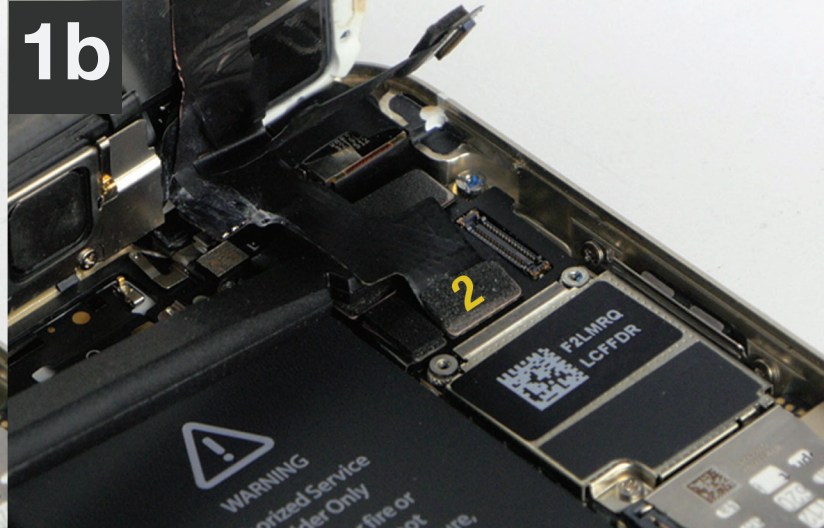
1 Gently disconnect flex cables 1-3 using **plastic pick** as shown in **images 1a-1c**.

- LIFT EACH CONNECTOR UPWARDS TO DISCONNECT.

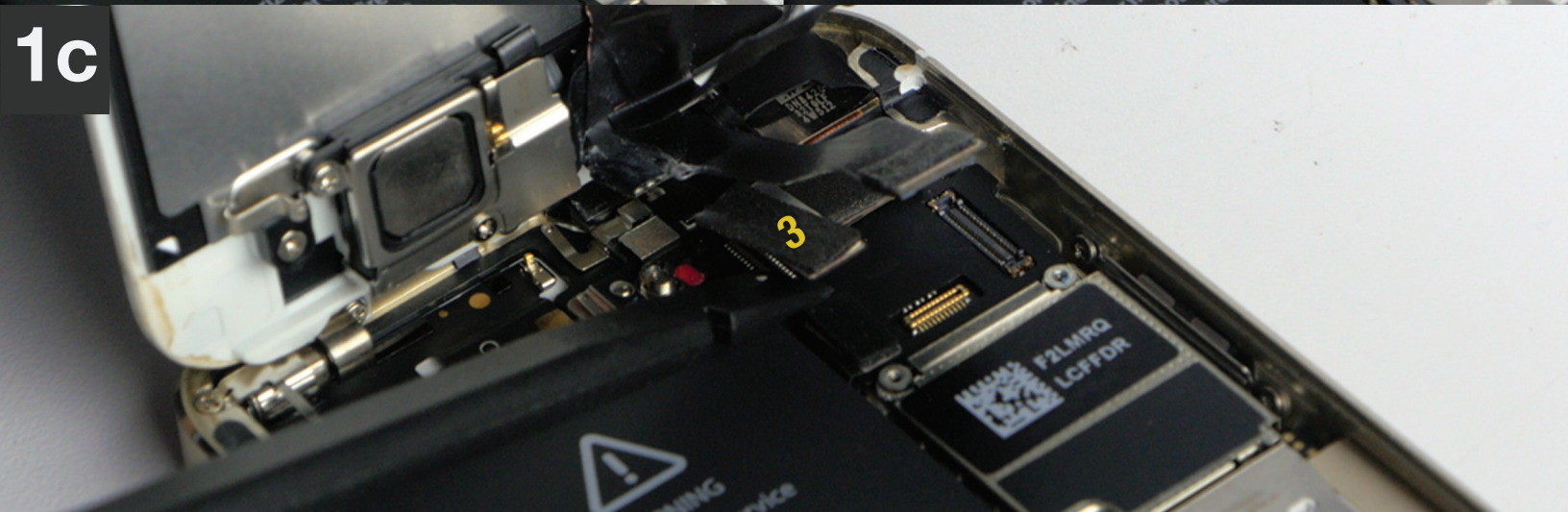
1a



1b



1c



- 1** Remove (2) **Phillips** screws as shown in **images 1a-1b**.
- 2** Remove battery shield with **tweezers**. as shown in **image 2**.

1a



1b



2



REMINDER

Use the included SCREW**MAT** to keep screws organized.

Battery Removal

- 1 Gently disconnect the battery flex with **plastic pick** as shown in **images 1a-1b**.
- 2 Remove battery by gently prying with **plastic pick** as shown in **images 2a-2b**.

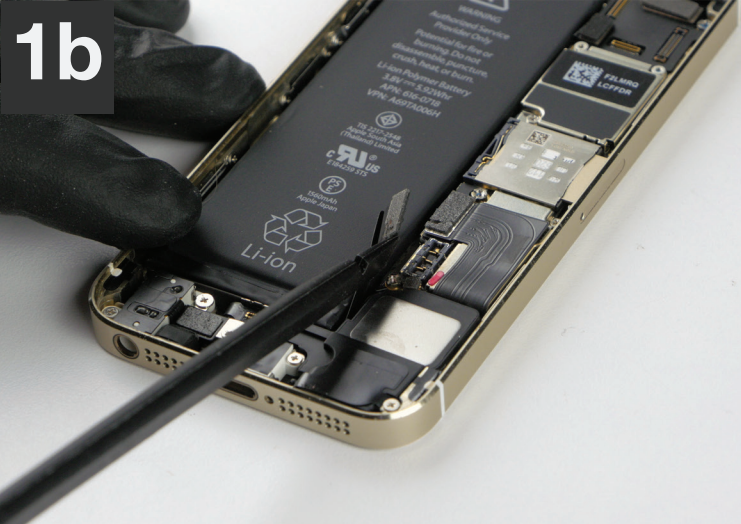
- THE ADHESIVE BEHIND THE BATTERY IS VERY STRONG. SO, PRY UP VERY GENTLY AND TRY NOT TO PUNCTURE THE BATTERY.

- **CAUTION:** A PUNCTURED BATTERY CAN BURN YOU OR START A FIRE.

1a



1b



2a



2b



Battery Installation

- 1** Insert your new battery.
- 2** Plug in battery flex connector to board.

The Re-Assembly Begins



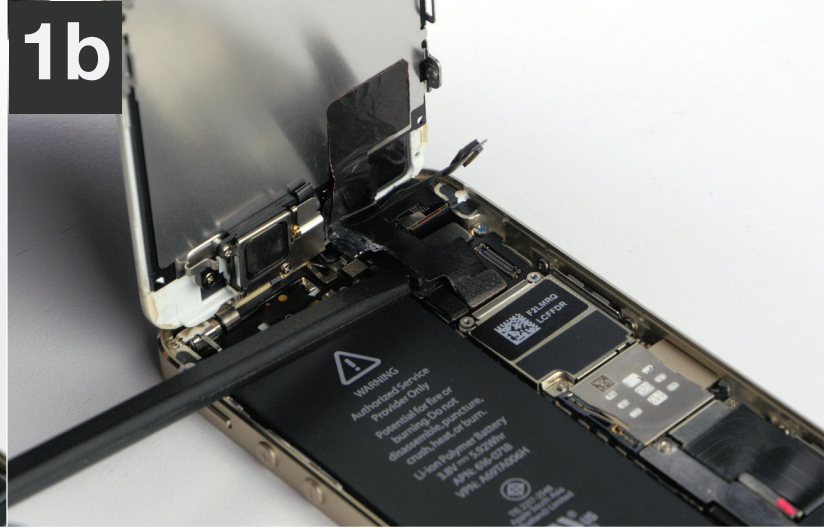
- 1** Align and place the battery shield with **tweezers** as shown in **image 1**.
- 2** Insert the (2) **Phillips** screws as shown in **images 2a-2b**.

- 1 Prepare new assembly and plug all (3) flex connectors onto the board as shown in **images 1a-1c**.

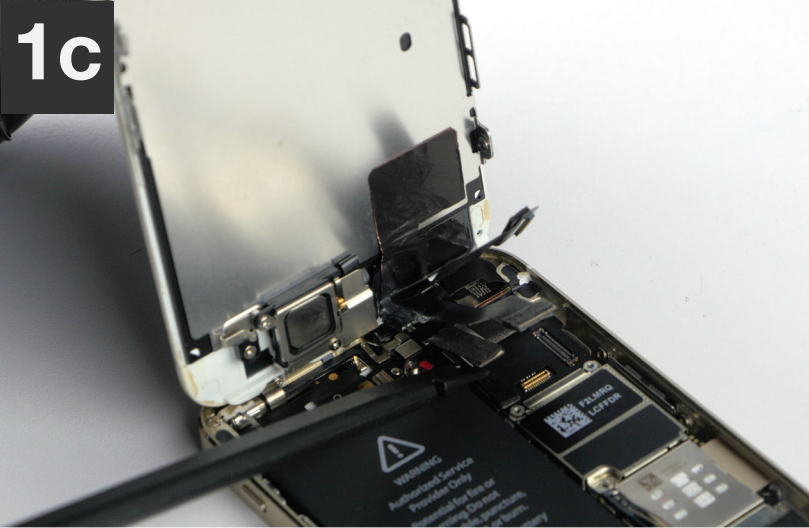
1a



1b



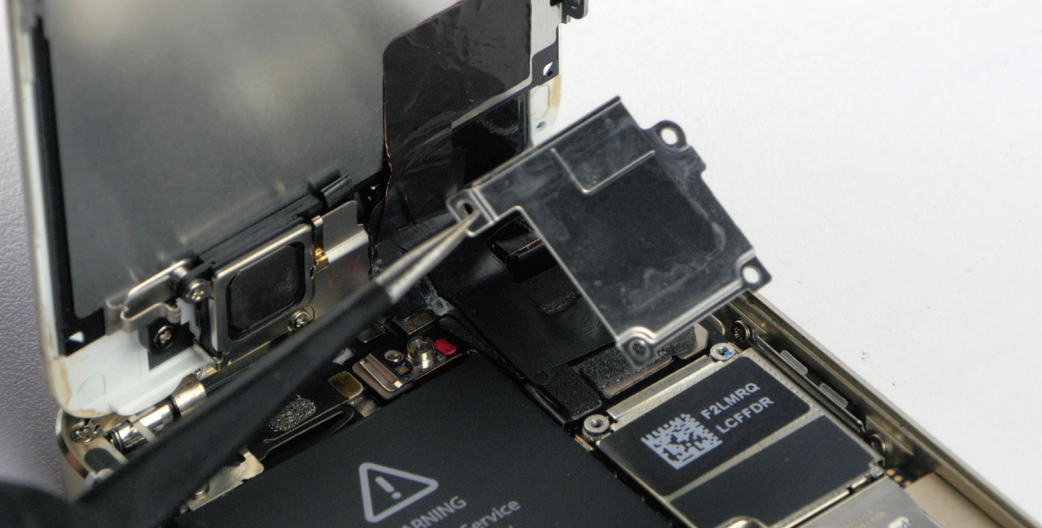
1c



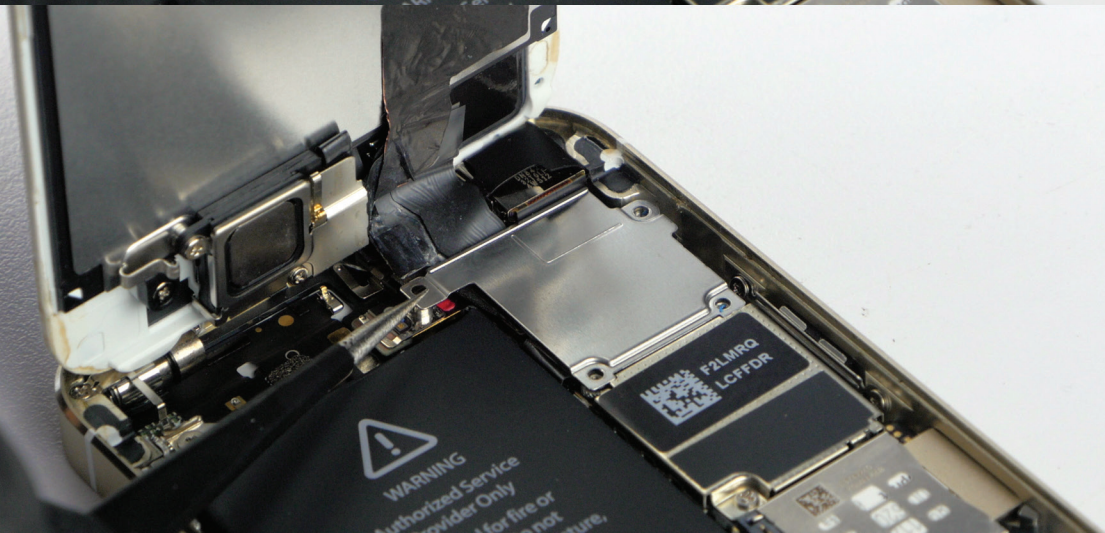
Using your index finger to line these connectors up and press them down is best.

- 1 Align and place shield back into position with **tweezers** as shown in **images 1a-1b**.

1a



1b



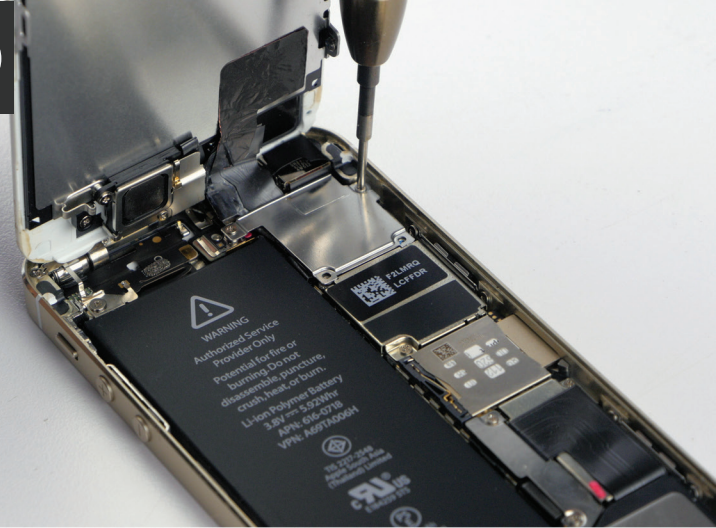
1 Insert all (4) **Phillips** screws as shown in **images 1a-1d**.

- ON SCREWMAT.

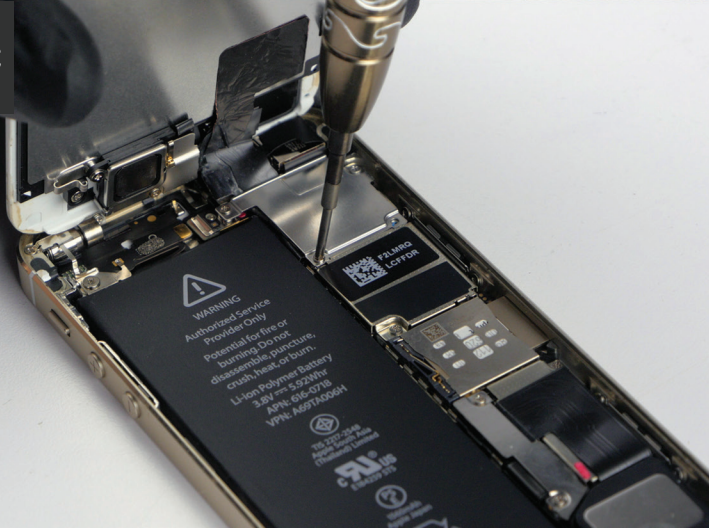
1a



1b



1c



1d

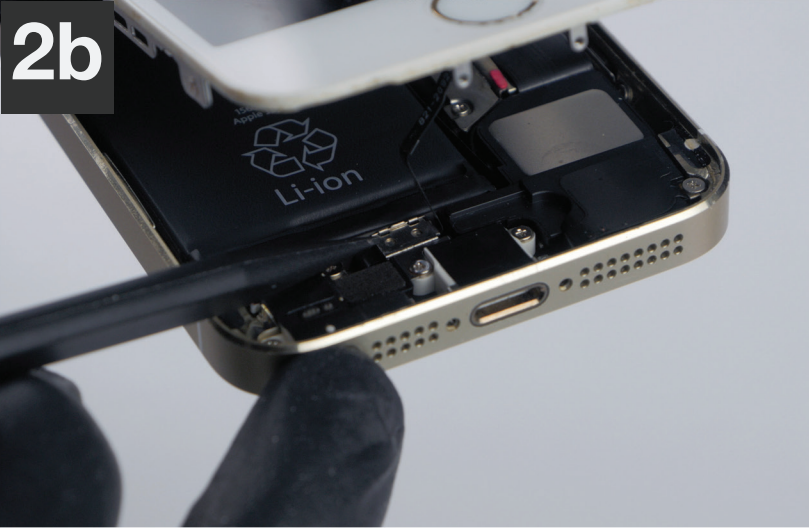


- 1** Carefully connect Touch ID flex, as shown in **image 1**.
- 2** Align and place Touch ID flex clip into place as shown in **images 2a-2b**.

1



2a



2b

1 Close LCD/digitizer into the housing as shown in **images 1a-1c.**

- FIRMLY AND EVENLY PRESS ON EDGES OF NEW SCREEN ASSEMBLY UNTIL IT GENTLY CLICKS INTO POSITION.

1a



1b



1c



- 1 Insert the (2) **pentalobe** screws into housing.



CONGRATULATIONS

You have reached the end
of your repair. *Nice work.*



