



iPhone 5C

DO-IT-YOURSELF COMPANION

BATTERY



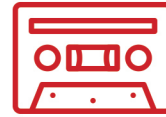
A couple of things you should do before repairing your device:



BACK UP YOUR DATA



POWER PHONE OFF



PLAY SOME TUNES

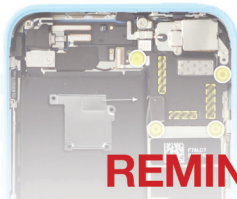
- 1** Get your SCREWMAT ready.
- 2** Make sure that your device is powered down.
- 3** Put on included **Tech Gloves**.
- 4** Remove (2) bottom screws with **pentalobe** driver as shown in **images 4a-4b**.

# 1

## DO-IT-YOURSELF SCREWMAT

INVENTED BY PHONE DOCTORS®

for your:  
**iPhone 5C**



- ★ Place the (2) exterior pentalobe screws on these circles
- BATTERY REPLACEMENT:** Place the (2) interior screws on these circles
- SCREEN REPLACEMENT:** Place the (2) display & LCD screws on these circles
- Carefully unplug flex cables, and antenna connectors from circuit board & display using plastic tool

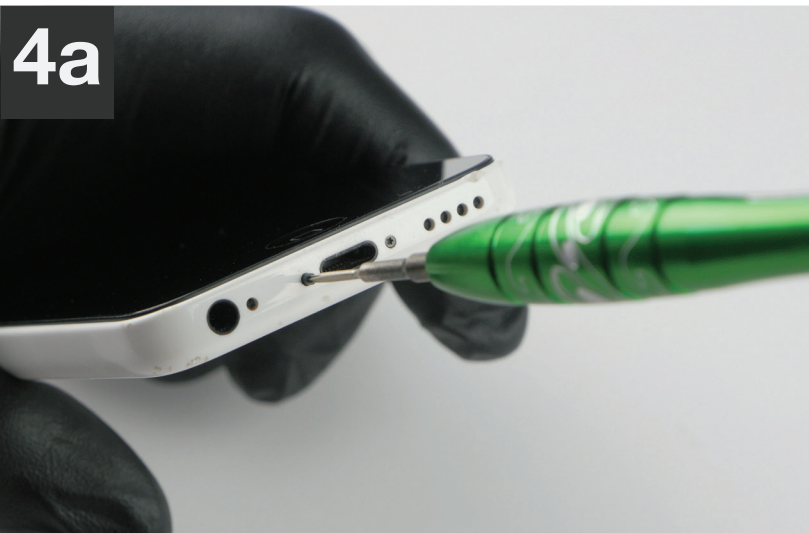
### REMINDER

Use the included **SCREWMAT** to keep screws organized.

# 2



# 4a



# 4b



**1** Use **metal pry tool** to remove screen.

- THERE IS A SMALL GROOVE ON THE SCREEN ASSEMBLY ABOVE HEADSET JACK THAT CAN BE UTILIZED FOR LEVERAGE WHEN PRYING UP SCREEN.

**2** Open screen assembly carefully and proceed to next page.



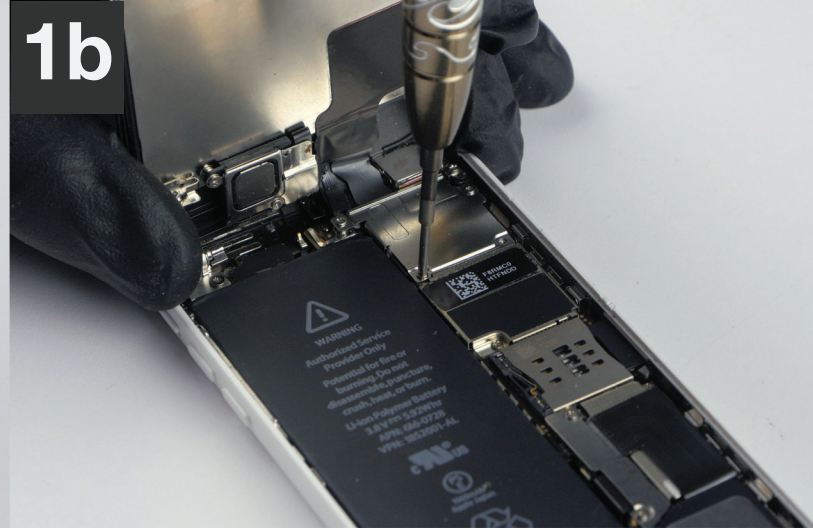
**REMINDER**  
Use the included **SCREWMAT**  
to keep screws organized.

**1** Remove the (4) shield screws with the **Phillips** driver as shown in **images 1a-1d**.

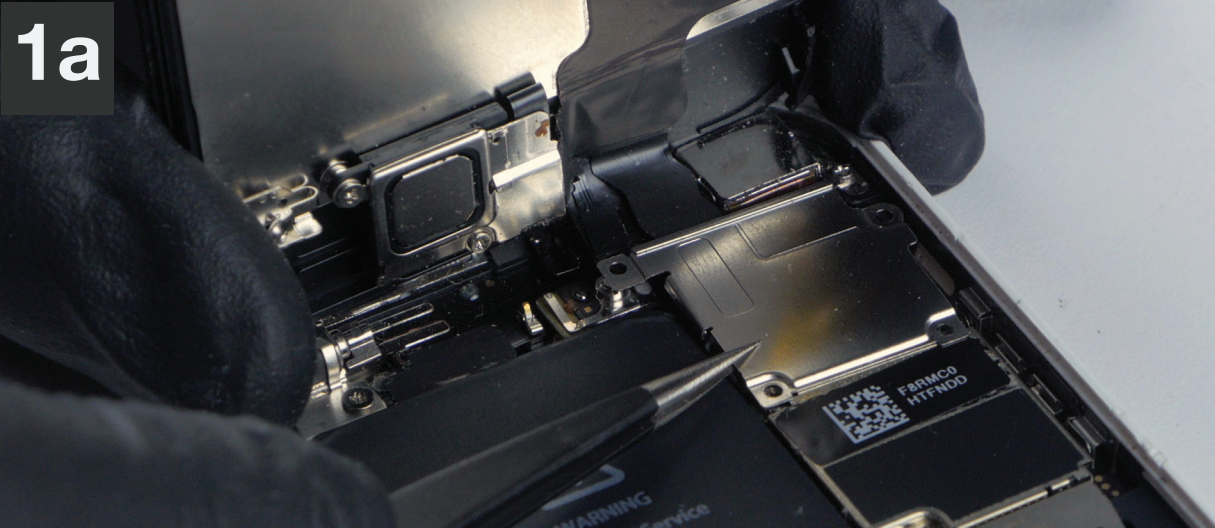
- USE SCREW**MAT** FOR ORGANIZATION OF THESE (4) SCREWS.

**\* KEEPING PERFECT ORDER OF THESE (4) SCREWS IS IMPERATIVE DUE TO THE LENGTH OF EACH SCREW. PLACING A SCREW IN THE WRONG LOCATION CAN RESULT IN DAMAGE TO YOUR DEVICE.**

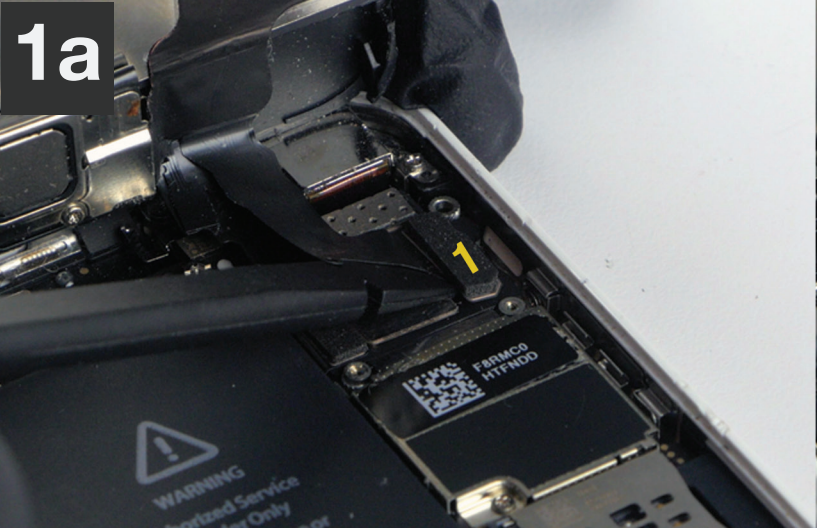




- 1** Carefully remove the flex shield with **tweezers** as shown in **images 1a-1b**.



- 1** Gently disconnect flex cables 1-3 using **plastic pick** as shown in **images 1a-1c**.
  - LIFT EACH CONNECTOR UPWARDS TO DISCONNECT.



- 1** Remove (2) **Phillips** screws as shown in **images 1a-1b**.
- 2** Remove battery shield with **tweezers** as shown in **images 2a-2b**.



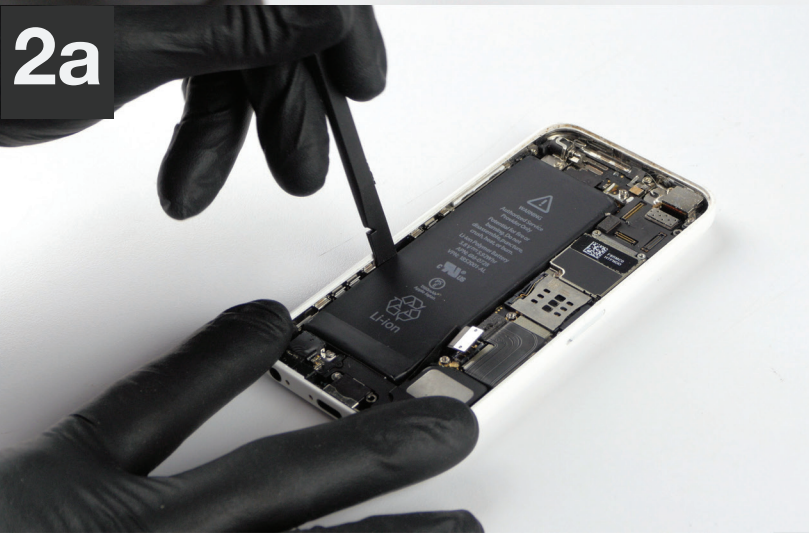
**1** Gently disconnect the battery flex with **plastic pick** as shown in **images 1a-1b**.

**2** Remove battery by gently prying with **plastic pick** as shown in **images 2a-2b**.

- THE ADHESIVE BEHIND THE BATTERY IS VERY STRONG. SO, PRY UP VERY GENTLY AND TRY NOT TO PUNCTURE THE BATTERY.

- **CAUTION:** A PUNCTURED BATTERY CAN BURN YOU OR START A FIRE.





# Battery Installation

- 1** Insert your new battery.
- 2** Plug in battery flex connector to board.

# The Re-Assembly Begins

1



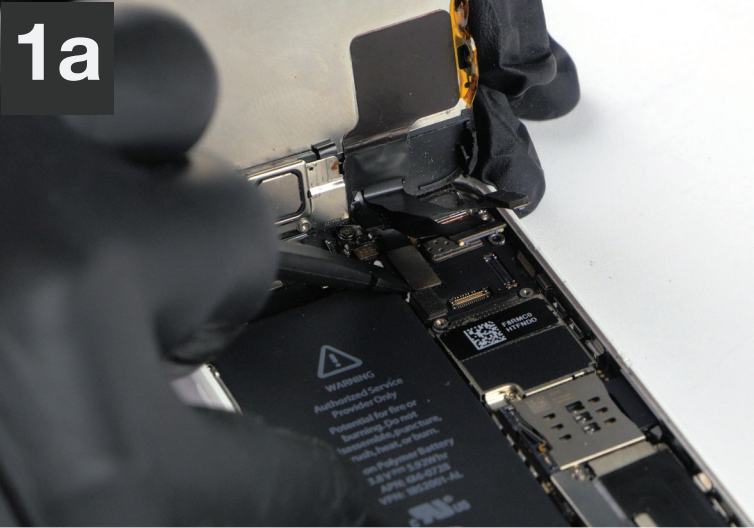
2



- 1** Align and place the battery shield with **tweezers** as shown in **images 1a-1b**.
- 2** Insert the (2) **Phillips** screws as shown in **images 2a-2b**.



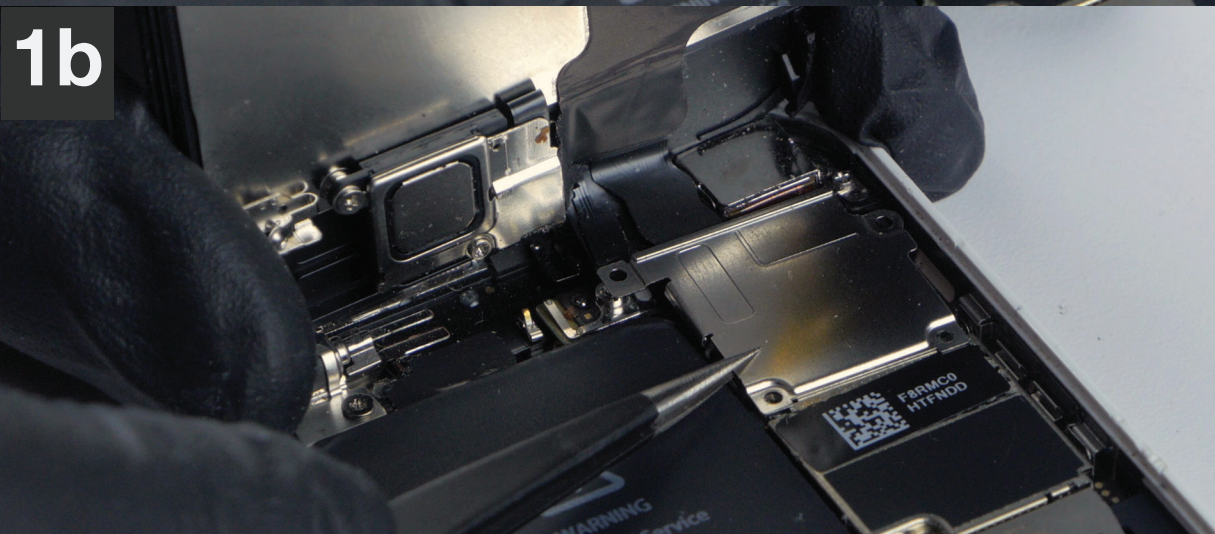
- 1** Prepare new assembly and plug all (3) flex connectors onto the board as shown in **images 1a-1c**.



Using your index finger to line these connectors up and press them down is best.

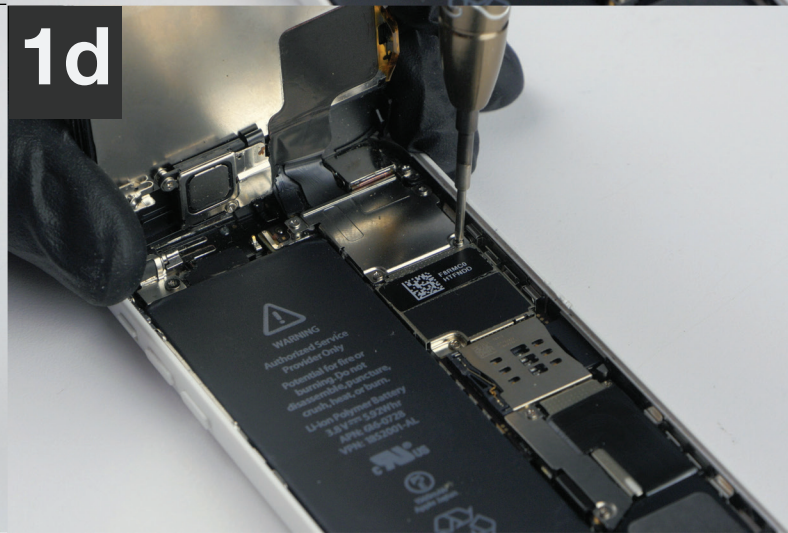
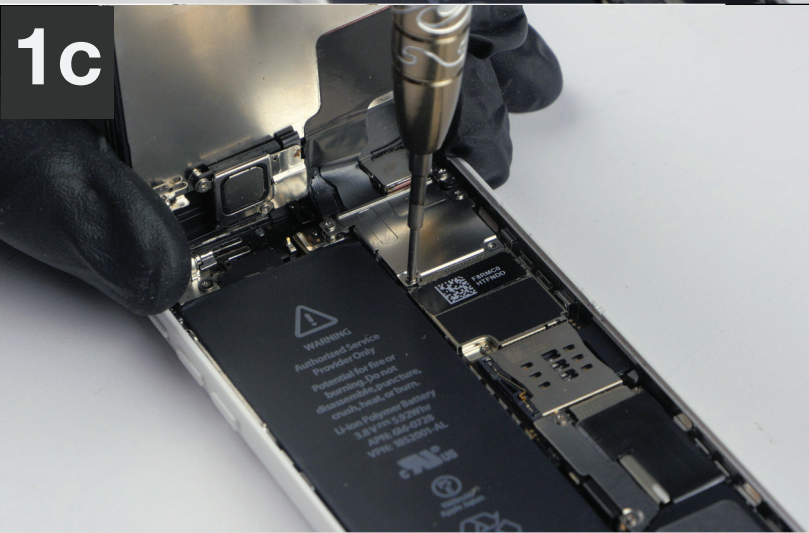
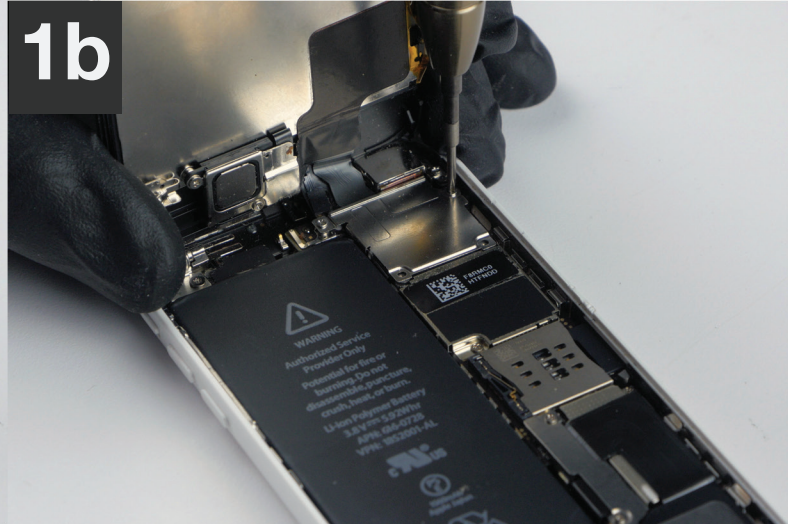
- 1 Align and place shield back into position with **tweezers** as shown in **images 1a-1b**.





**1** Insert all (4) **Phillips** screws as shown in **images 1a-1d**.

- ON SCREWMAT.



## 1 Close LCD/digitizer into the housing as shown in **images 1a-1c.**

- FIRMLY AND EVENLY PRESS ON EDGES OF NEW SCREEN ASSEMBLY UNTIL IT GENTLY CLICKS INTO POSITION.

1a



1b



1c



- 1 Insert the (2) **pentalobe** screws into housing.



## **CONGRATULATIONS**

You have reached the end  
of your repair. *Nice work.*



